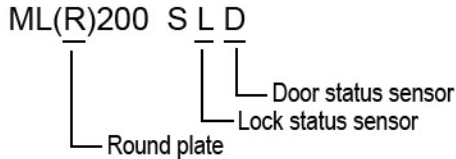


# ELECTRIC BOLT

## ML200 SERIES

### ORDERING INFORMATION



EXAMPLE :

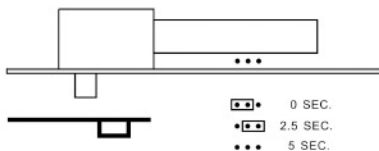
- ML200SLD – With lock and door status sensor
- MLR200SLD – Round plate, with lock and door status sensor

### SPECIFICATIONS

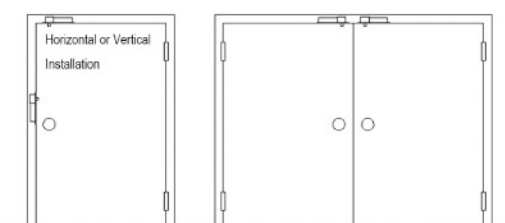
- Fail-safe: Locked when energized
- Voltage: 12VDC or 24VDC
- Current Draw:
  - Pull-in: 1A/12VDC
  - Holding: 0.3A/12VDC
- With lock and door status sensor
- Built-in voltage spike suppressor
- Face Plate Material: Aluminum or Stainless Steel
- Weight: 0.9KGS.

### AUTOLOCK TIME DELAY SETTING

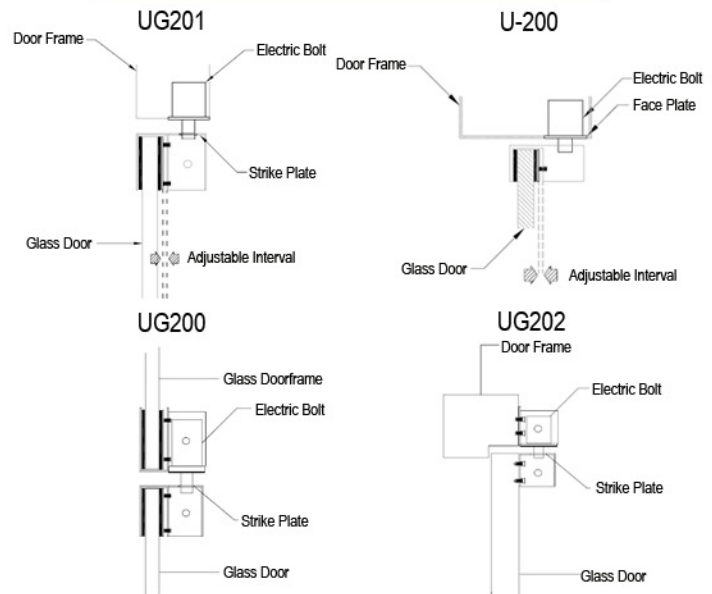
- Use jumper to select auto-lock time delay (0, 2.5, 5 sec.)



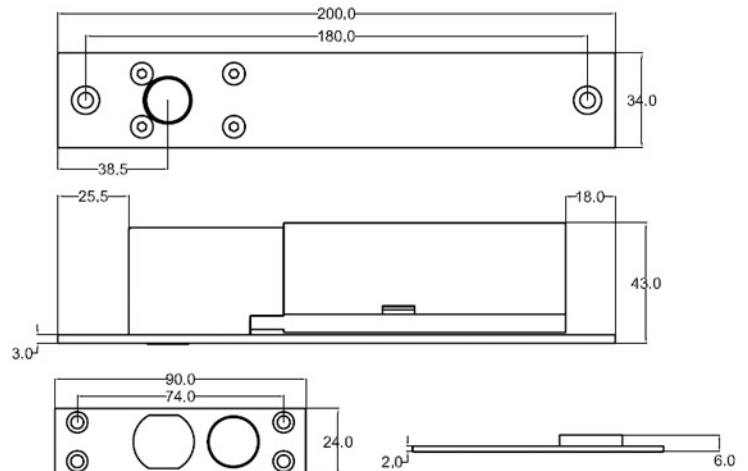
### INSTALLATION POSITIONS



### BRACKETS



### DIMENSIONS



VGSE RESERVES THE RIGHT TO CHANGE SPECIFICATIONS WITHOUT NOTICE.